



Noise Monitoring Result

Day Time (0700 - 1900hrs on normal weekdays)

Location: M1a - Footbridge at EX-Wanchai Harbour Road Sports Centre

Date	Time	Weather	Measurement Noise Level			Baseline Level	Construction Noise Level	Limit Level
			Leq	L10	L90	Leq	Leq	Leq
Unit: dB(A), (30-min)								
6/10/2017	10:25	Fine	74.7	76.7	71.6	72	71	75
13/10/2017	10:10	Fine	75.4	77.0	72.8	72	73	75
19/10/2017	13:15	Fine	76.5	78.2	74.2	72	74	75
23/10/2017	10:35	Fine	75.8	77.9	72.3	72	73	75

Location: M2b - Noon-day gun area

Date	Time	Weather	Measurement Noise Level			Baseline Level	Construction Noise Level	Limit Level
			Leq	L10	L90	Leq	Leq	Leq
Unit: dB(A), (30-min)								
6/10/2017	11:10	Fine	66.5	68.0	64.7	68	67	75
13/10/2017	10:55	Fine	68.8	71.1	65.9	68	63	75
19/10/2017	14:10	Fine	67.5	68.1	65.0	68	68	75
24/10/2017	14:00	Fine	67.4	69.2	65.3	68	67	75

Location: M3a - Tung Lo Wan Fire Station

Date	Time	Weather	Measurement Noise Level			Baseline Level	Construction Noise Level	Limit Level
			Leq	L10	L90	Leq	Leq	Leq
Unit: dB(A), (30-min)								
6/10/2017	13:00	Fine	68.3	70.6	63.9	69	68	75
11/10/2017	14:00	Fine	65.5	66.8	63.6	69	66	75
17/10/2017	09:10	Cloudy	65.0	66.4	62.6	69	65	75
24/10/2017	08:55	Fine	65.2	66.6	62.7	69	65	75

Location: M4b - Victoria Centre

Date	Time	Weather	Measurement Noise Level			Baseline Noise Level	Construction Noise Level	Limit Level
			Leq	L10	L90	Leq	Leq	Leq
Unit: dB(A), (30min)								
6/10/2017	13:40	Fine	66.6	68.1	64.6	67	67	75
11/10/2017	14:40	Fine	67.7	69.4	65.3	67	57	75
17/10/2017	09:50	Cloudy	66.3	67.9	64.1	67	66	75
24/10/2017	09:35	Fine	65.5	66.8	63.7	67	66	75

Location: M5b - City Garden

Date	Time	Weather	Measurement Noise Level			Baseline Level	Construction Noise Level	Limit Level
			Leq	L10	L90	Leq	Leq	Leq
Unit: dB(A), (30min)								
6/10/2017	14:15	Fine	72.6	73.5	71.3	68	71	75
11/10/2017	15:25	Fine	70.2	71.2	68.9	68	66	75
17/10/2017	10:30	Cloudy	71.6	72.8	70.0	68	69	75
24/10/2017	10:30	Fine	70.8	71.7	69.0	68	68	75

Location: M6 - HK Baptist Church Henrietta Secondary School

Date	Time	Weather	Measurement Noise Level			Baseline Level	Construction Noise Level	Limit Level
			Leq	L10	L90	Leq	Leq	Leq
Unit: dB(A), (30-min)								
6/10/2017	15:00	Fine	66.5	67.7	64.3	71	67	70
11/10/2017	16:00	Fine	66.2	68.6	64.5	71	66	70
17/10/2017	11:10	Cloudy	68.0	69.2	66.5	71	68	70
24/10/2017	11:05	Fine	67.6	68.7	66.4	71	68	70



Noise Monitoring Result

Day Time (0700 - 1900hrs on normal weekdays)

Location: M7e - International Finance Centre (Eastern End of Podium) (Reference Station)

Date	Time	Weather	Measurement Noise Level			Baseline Level	Construction Noise Level	Limit Level
			Leq	L10	L90	Leq	Leq	Leq
Unit: dB(A), (30-min)								
3/10/2017	14:10	Fine	70.3	73.4	65.6	67	68	N/A
10/10/2017	14:35	Fine	67.7	69.2	65.3	67	60	N/A
17/10/2017	13:50	Cloudy	66.1	67.8	63.2	67	66	N/A
23/10/2017	13:30	Fine	68.6	70.7	64.2	67	64	N/A

Location: M7w - International Finance Centre (Western End of Podium)

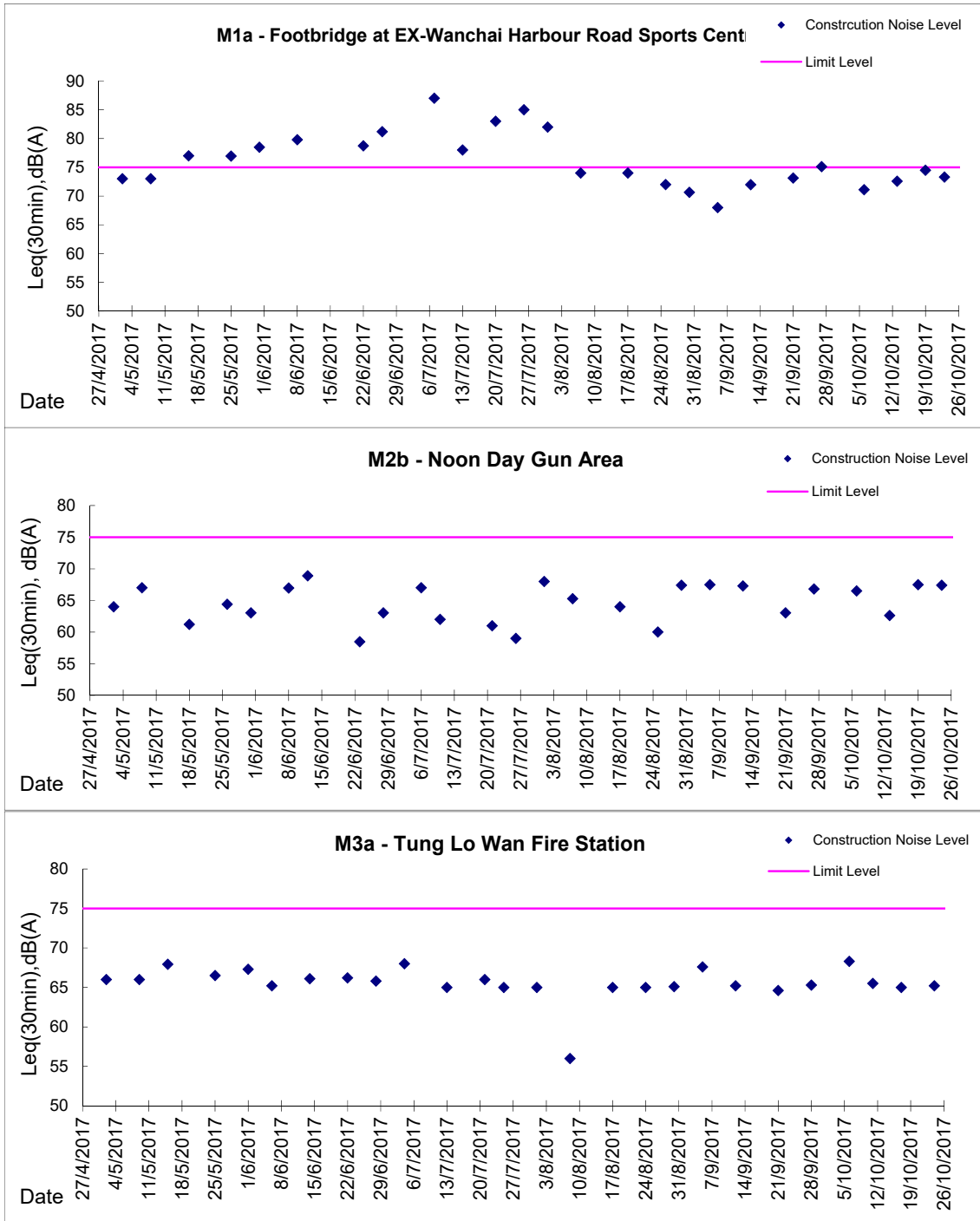
Date	Time	Weather	Measurement Noise Level			Baseline Level	Construction Noise Level	Limit Level
			Leq	L10	L90	Leq	Leq	Leq
Unit: dB(A), (30-min)								
3/10/2017	14:45	Fine	70.3	72.7	64.9	69	63	75
10/10/2017	15:10	Fine	67.1	70.7	63.8	69	67	75
17/10/2017	14:35	Cloudy	69.9	71.4	66.5	69	60	75
23/10/2017	14:05	Fine	65.4	66.9	63.2	69	65	75

Location: M8 - City Hall

Date	Time	Weather	Measurement Noise Level			Baseline Level	Construction Noise Level	Limit Level
			Leq	L10	L90	Leq	Leq	Leq
Unit: dB(A), (30-min)								
3/10/2017	15:40	Fine	62.2	63.8	56.2	64	62	70
13/10/2017	14:15	Fine	60.1	62.0	56.9	64	60	70
17/10/2017	15:15	Cloudy	60.4	61.8	56.5	64	60	70
23/10/2017	14:50	Fine	60.4	61.9	57.6	64	60	70

Graphic Presentation of Noise Monitoring Result

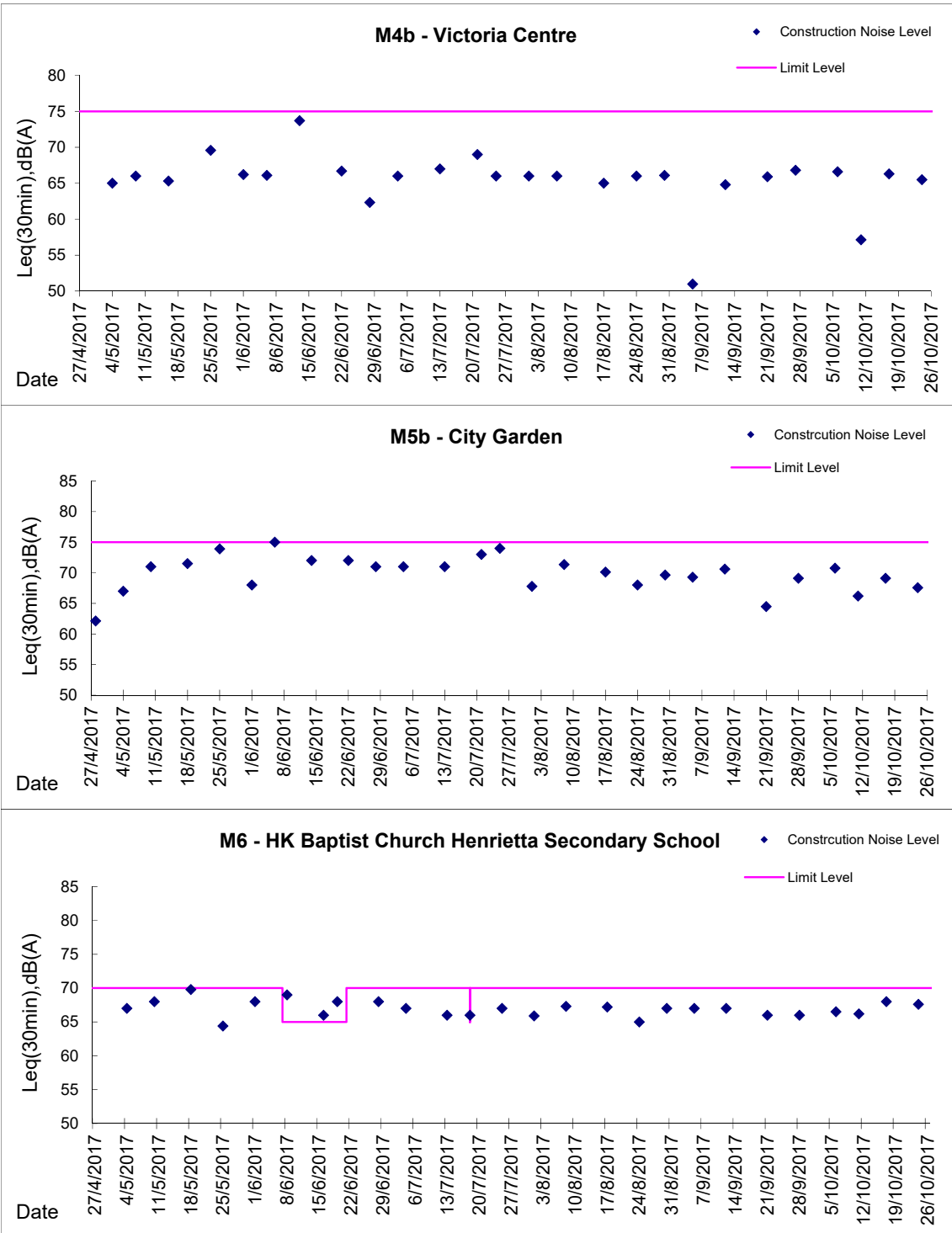
Day Time (0700 - 1900hrs on normal weekdays)





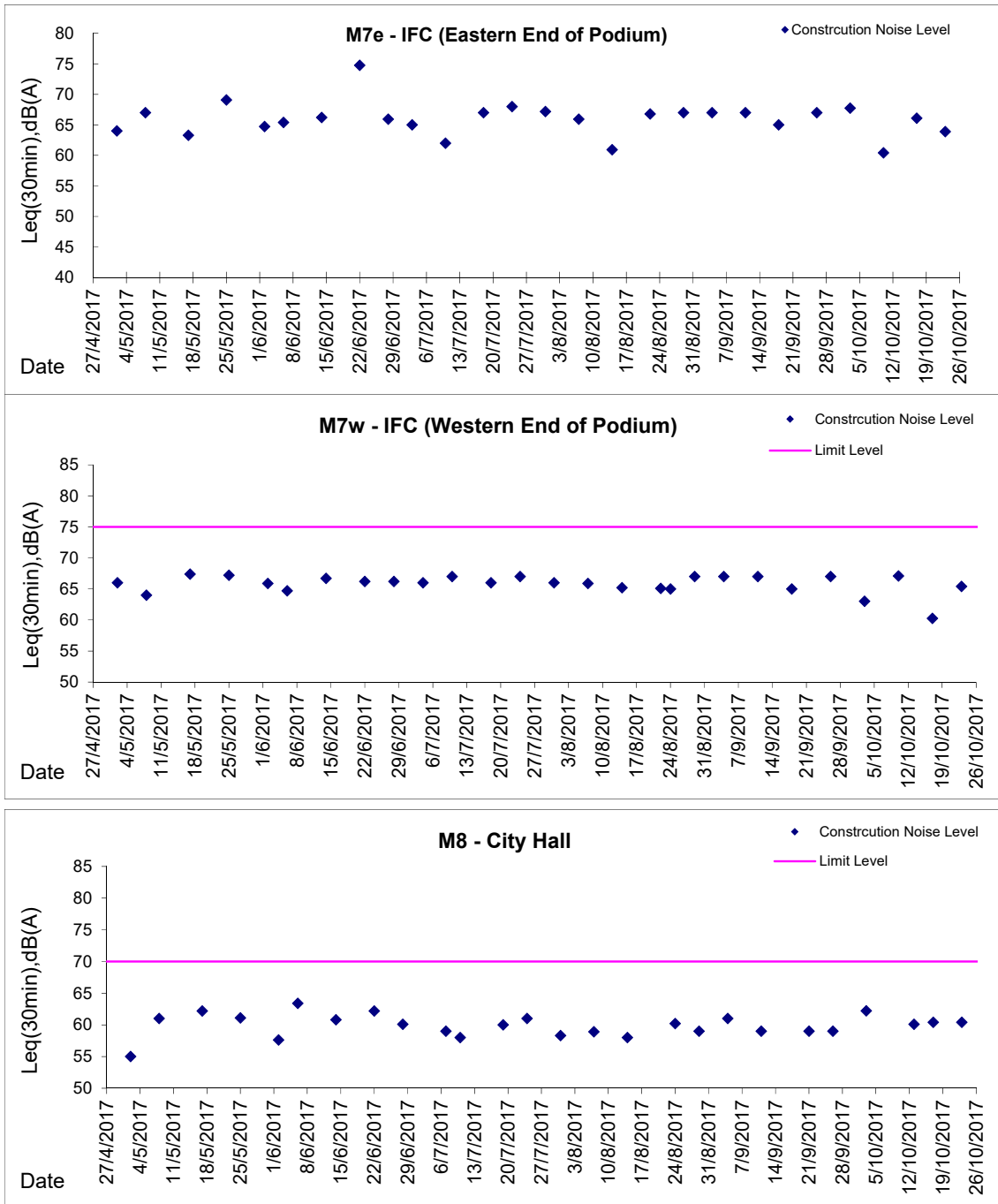
Graphic Presentation of Noise Monitoring Result

Day Time (0700 - 1900hrs on normal weekdays)



Graphic Presentation of Noise Monitoring Result

Day Time (0700 - 1900hrs on normal weekdays)



* Remark: M7e - IFC (Eastern End of Podium) is a reference monitoring station